

The power behind competitiveness

Delta InfraSuite Rack & Accessories

Modular Rack

Modular design for optimizing space utilization

The modular rack is essential gear for data centers. Delta has developed a modular rack that increases space utilization and heat dissipation via 70% perforation to meet high density IT room requirements.

Convenience

- Tool-less installing and removing & reversing front and rear doors
- Removable power trough on the roof neatly manages power, network and optic cables
- Tool-less removable roof cable ports for easier cable access and management
- Removable bottom cover allows cable access through raised floor
- Casters for convenient moving
- Front and rear U-position numbers for easy installation
- Easy to join racks in a row for a clean and secure data room
- Front and rear doors open up to 130° for convenient installation and repair
- Full range of accessories supporting a well-managed and organized data room

Flexibility

- Split rear doors reduce space required for hot aisles and simplify maintenance
- Adjustable mounting rails with numbered guides help adjust depth for different installation needs
- Four multipurpose mounting bays for installing 0U PDU or vertical cable trough
- Fully meets industry-standard EIA-310 rack requirements

Safety

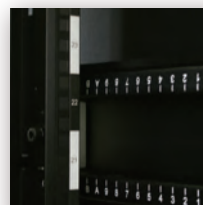
- Supporting up to 1420 kg static weight
- IP20 environment protection rating
- Adjustable leveling feet for stability and security
- Front and rear doors are grounded to the rack
- Front and rear doors with locks



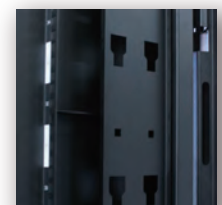
Roof Cable Ports
& Covers



Roof Cable Trough



Vertical Position Marks



4 Universal
Mounting Brackets



Delta InfraSuite Rack & Accessories

Modular Rack

Physical

Item	Model	Dimensions (W x D x H)	Packing Dimensions (W x D x H)	Net Weight
1	SR3110	800(19") x 1100 x 2000 mm	830 x 1160 x 2156 mm	150 kg
2	SR1110	600 x 1100 x 2000 mm	630 x 1160 x 2156 mm	137 kg
3	SR3160	800(19") x 1200 x 2000 mm	830 x 1260 x 2156 mm	160 kg
4	SR1160	600 x 1200 x 2000 mm	630 x 1260 x 2156 mm	150 kg

Conformance

Protection Rating	IP20
Rack Standards	EIA-310-D
Safe Grounding	UL 60950 (max. 63A)
Environmental	RoHS

Environment

Temperature	Operating: 0~40°C Storage: -15~50°C
Relative Humidity	Operating: 0~95%
Elevation	Operating: 0~3000 m

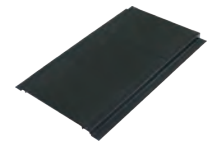
Accessory List

Model	Description	SR1110/SR1160	SR3110/SR3160
SR7001	1U HORIZONTAL CABLE MANAGEMENT	●	●
SR7002	VERTICAL CABLE MANAGEMENT CHANNEL	●	●
SR7003	CABLE LADDER,300 mm	●	●
SR7004	RING TYPE WIRE HOLDER (10 pcs/per box)	●	●
SR8001	POWER CABLE TROUGH WITH THROUGH-HOLE,800 mm		●
SR8002	CABLE TROUGH WITH TROUGH-HOLE,800 mm		●
SR8003	BOTTOM COVER FOR W800 x D1100 RACK CABINET		● (only for SR3110)
SR9001	POWER CABLE TROUGH WITH THROUGH-HOLE,600 mm	●	
SR9002	CABLE TROUGH WITH TROUGH-HOLE,600 mm	●	
SR9003	BOTTOM COVER FOR W600*D1100 RACK CABINET	● (only for SR1110)	
SR9004	1U FIXED SHELF	●	●
SR9005	1U SLIDING SHELF	●	●
SR9006	1U BLANKING PANEL (10 pcs/per box)	●	●
SR9007	2U BLANKING PANEL (10 pcs/per box)	●	●

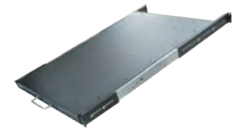
These specifications are subject to change without notice. Please contact us or our distributors in your region for the latest specs.



Power Cable Trough with Through-hole



Bottom Cover



1U Sliding Shelf



1U Horizontal Cable Management Channel



Cable Ladder



1U Blanking Panel



2U Blanking Panel